

Where there is sunshine
**Unwanted
electric**



Installation Notes

1. For installations in the Northern Hemisphere, ensure the solar panel faces south for optimal sunlight. In the Southern Hemisphere, it should face north.
2. Avoid areas where tall buildings, trees, or other obstructions may block sunlight and affect solar charging efficiency.
3. Keep the solar panel surface clean — dirt or dust buildup will reduce charging performance.
4. The solar panel outputs DC 12V, and can also be used with other DC 12V lamps or devices that require stable solar power.



SOLAR ENERGY INTEGRATED STREET LAMP SERIES



SY-50

Product Name: 10W Split Solar Street Light
Light Source: 5730 LED Chip
Solar Panel: 16V / 10W
Battery: 11.1V / 2000 mAh
Working Mode: Light-controlled induction
Lighting Duration: 8-10 hours
Installation Height: 3-4 m
Illumination Area: 60 m²



SY-10

Product Name: 10W Split Solar Floodlight
Light Source: 5730 LED Chip
Solar Panel: 6V / 10W
Battery: 3.7V / 8800 mAh
Working Mode: Light-controlled induction
Lighting Duration: 8-10 hours
Installation Height: 3-4 m
Illumination Area: 50 m²



SY-21

Product Name: 12W Integrated Solar Street Light
Light Source: LED Chip
Solar Panel: 16V / 12W
Battery: 11.1V / 4 Ah
Working Mode: Light-controlled + motion-sensor mode
Lighting Duration: 9-11 hours
Installation Height: 3-4 m
Illumination Area: 80 m²



SY-20

Product Name: 20W Integrated Solar Street Light
Light Source: LED Chip
Solar Panel: 16V / 20W
Battery: 11.1V / 8 Ah
Working Mode: Light-controlled + motion-sensor mode
Lighting Duration: 9-11 hours
Installation Height: 4-5 m
Illumination Area: 120 m²



SY-31

Product Name: 12W Integrated Solar Street Light
 Light Source: LED Chip
 Solar Panel: 16V / 12W
 Battery: 11.1V / 4Ah
 Working Mode: Light + Motion Sensor
 Lighting Duration: 9-11 hours
 Mounting Height: 3-4 m
 Illumination Area: 90 m²



SY-30

Product Name: 30W Integrated Solar Street Light
 Light Source: LED Chip
 Solar Panel: 16V / 35W
 Battery: 11.1V / 10Ah
 Working Mode: Light + Motion Sensor
 Lighting Duration: 9-11 hours
 Mounting Height: 5-6 m
 Illumination Area: 160 m²



SY-36

Product Name: 40W Integrated Solar Street Light
 Light Source: LED Chip
 Solar Panel: 16V / 50W
 Battery: 11.1V / 14Ah
 Working Mode: Light + Motion Sensor
 Lighting Duration: 9-11 hours
 Mounting Height: 6-7 m
 Illumination Area: 220 m²



SY-38

Product Name: 60W Integrated Solar Street Light
 Light Source: LED Chip
 Solar Panel: 16V / 60W
 Battery: 11.1V / 18Ah
 Working Mode: Light + Motion Sensor
 Lighting Duration: 9-11 hours
 Mounting Height: 6-8 m
 Illumination Area: 260 m²



SY-20B

Product Name: 20W / 24 LED Solar Flood Light
 Light Source: 5730 LED Chip
 Solar Panel: 16V / 20W
 Battery: 11.1V / 6600 mAh
 Working Mode: Light-controlled induction
 Lighting Duration: 9-11 hours
 Mounting Height: 4-5 m
 Illumination Area: 120 m²



SY-30B

Product Name: 30W Solar Flood Light
 Light Source: 5730 LED Chip
 Solar Panel: 16V / 35W
 Battery: 11.1V / 10,000 mAh
 Working Mode: Light-controlled induction
 Lighting Duration: 9-11 hours
 Mounting Height: 5-6 m
 Illumination Area: 160 m²



SY-22

Product Name: 20W Integrated Solar Street Light (Dual-Mode Control)
 Light Source: LED Chip
 Solar Panel: 16V / 20W
 Battery: 11.1V / 6600 mAh
 Working Mode: Light + Motion Sensor
 Lighting Duration: 9-11 hours
 Mounting Height: 4-5 m
 Illumination Area: 120 m²



SY-30W

Product Name: 30W Integrated Solar Street Light (Circular Head Type)
 Light Source: LED Chip
 Solar Panel: 16V / 20W
 Battery: 11.1V / 10,000 mAh
 Working Mode: Light + Motion Sensor
 Lighting Duration: 9-11 hours
 Mounting Height: 5-6 m
 Illumination Area: 160 m²

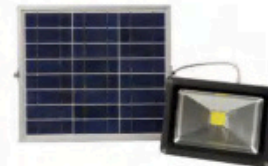


SOLAR ENERGY CAST LIGHT SERIES



SYT-5

Product Name: Solar Floodlight (5W)
Light Source: LED Chip
Solar Panel: 12V / 5W
Battery: 7.4V / 2Ah
Working Mode: Light-controlled induction
Lighting Duration: 18+ hours
Illumination Area: 20 m²
Dimensions: 240×205×18 mm



SYT-8

Product Name: Solar Floodlight (8W)
Light Source: LED Chip
Solar Panel: 12V / 8W
Battery: 7.4V / 4Ah
Working Mode: Light-controlled induction
Lighting Duration: 20+ hours
Illumination Area: 35 m²
Dimensions: 250×250×18 mm



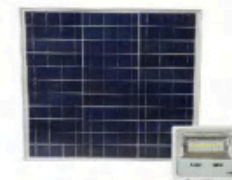
SYT-12

Product Name: Solar Floodlight (12W)
Light Source: LED Chip
Solar Panel: 16V / 12W
Battery: 7.4V / 4Ah
Working Mode: Light-controlled induction
Lighting Duration: 30+ hours
Illumination Area: 100 m²
Dimensions: 340×280×18 mm



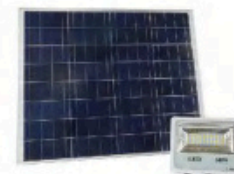
YT-30A

Product Name: 30W White LED Solar Floodlight
Light Source: LED Chip
Solar Panel: 18V / 60W
Battery: 12.8V / 20Ah
Working Mode: Light-controlled
Lighting Duration: 6+ hours
Mounting Height: 6-8 m
Illumination Area: 200 m²



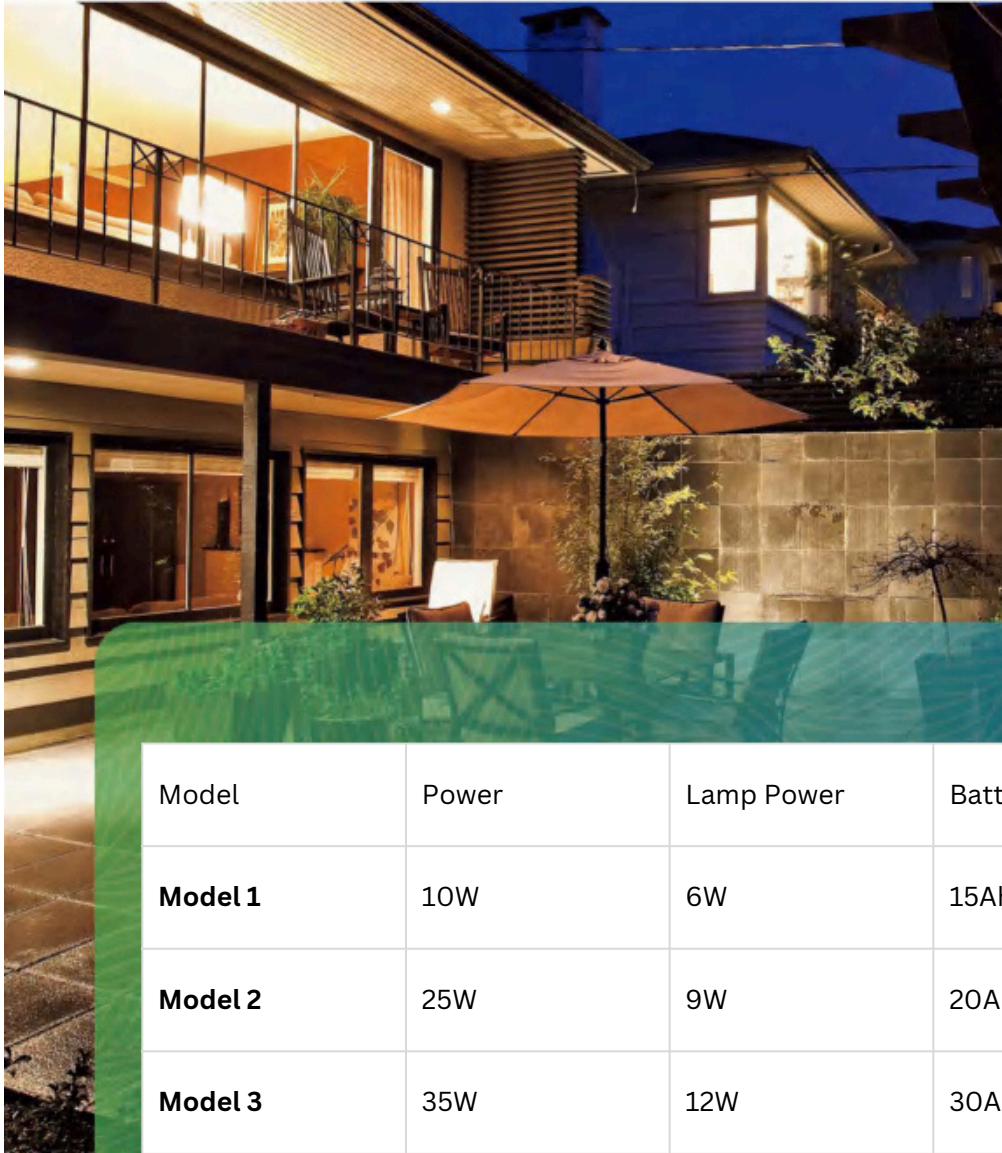
YT-30B

Product Name: 30W White LED Solar Floodlight
Light Source: LED Chip
Solar Panel: 18V / 60W
Battery: 12.8V / 20Ah
Working Mode: Light-controlled
Lighting Duration: 6+ hours
Mounting Height: 6-8 m
Illumination Area: 200 m²



YT-40

Product Name: 50W White LED Solar Floodlight
Light Source: LED Chip
Solar Panel: 18V / 80W
Battery: 12.8V / 30Ah
Working Mode: Light-controlled
Lighting Duration: 6+ hours
Mounting Height: 7-9 m
Illumination Area: 250 m²



Model 1



Model 2



Model 3

Model	Power	Lamp Power	Battery	Control	Height	Size (mm)	Lifespan
Model 1	10W	6W	15Ah	Light + Motion Sensor	300 mm	490×465×335	5–8 years
Model 2	25W	9W	20Ah	Light + Motion Sensor	300 mm	550×490×415	5–8 years
Model 3	35W	12W	30Ah	Light + Motion Sensor	300 mm	635×385×430	5–8 years



DDK-A614 D:0.22m H:0.8m DDK-A615 D:0.22m H:0.8m DDK-A605 D:0.22m H:0.8m DDK-A606 D:0.25m H:0.8m DDK-A607 D:0.22m H:0.6m DDK-A617 D:0.22m H:0.8m



DDK-A608 D:0.2m H:0.8m DDK-A609 D:0.22m H:0.8m DDK-A621 D:0.3m H:0.8m DDK-A623 D:0.22m H:0.8m DDK-A624 D:0.22m H:0.6m DDK-A613 D:0.22m H:0.8m



DDK-A603 D:0.22m H:0.8m DDK-A604 D:0.22m H:0.7m DDK-A612 D:0.22m H:0.6m DDK-A611 D:0.22m H:0.8m DDK-A601 D:0.25m H:0.8m DDK-A602 D:0.22m H:0.8m



DDK-A626 W210 x H600mm DDK-A627 W250 x H600mm DDK-A628 W280 x H600mm DDK-A629 W250 x H600mm DDK-A630 W250 x H600mm DDK-A631 W240 x H600mm



DDK-A701 D:0.22m H:0.6m DDK-A702 D:0.22m H:0.8m DDK-A703 D:0.22m H:0.6m DDK-A705 D:0.22m H:0.6m DDK-A706 D:0.22m H:0.6m DDK-A707 D:0.22m H:0.6m



DDK-A708 D:0.22m H:0.8m DDK-A709 D:0.22m H:0.6m DDK-A710 D:0.22m H:0.8m DDK-A712 D:0.22m H:0.6m DDK-A730 W250 x H600mm DDK-A729 W230 x H900mm



DDK-A715 D:0.22m H:0.7m DDK-A718 D:0.22m H:0.9m LX-A719 D:0.22m H:1.1m DDK-A720 D:0.22m H:0.8m DDK-A723 D:0.22m H:1m DDK-A722 D:0.22m H:0.9m



DDK-A727 DDK-A728 DDK-A724 DDK-A725 DDK-A726 DDK-A713 DDK-A714



DDK-A419 D:0.22m H:0.6m DDK-A404 D:0.22m H:0.8m DDK-A406 D:0.22m H:0.6m DDK-A432 DDK-A433 DDK-A408 D:0.22m H:0.6m



DDK-A411 D:0.22m H:0.6m DDK-A410 D:0.22m H:0.6m DDK-A414 D:0.22m H:0.8m DDK-A415 D:0.22m H:0.8m DDK-A403 D:0.22m H:0.8m DDK-A405 D:0.22m H:0.8m



DDK-A421 D:0.22m H:0.8m DDK-A422 D:0.22m H:0.8m DDK-A413 D:0.22m H:0.8m DDK-A434W220 x H600mm DDK-A417 D:0.22m H:0.8m DDK-A435



DDK-A425 W230 x H600mm DDK-A427W185 x H600mm DDK-A428W250 x H600mm DDK-A429W150 x H600mm DDK-A430W180 x H600mm DDK-A431W180 x H600mm



DDK-A501 D:0.22m H:0.8m DDK-A510 D:0.22m H:0.6m DDK-A503D:0.22m H:0.8m DDK-A504 D:0.22m H:0.7m DDK-A505 D:0.22m H:0.8m DDK-A506 D:0.22m H:0.8m



DDK-A507 D:0.22m H:0.6m DDK-A502 D:0.22m H:0.6m DDK-A509 D:0.22m H:0.8m DDK-A514 D:0.22m H:0.8m DDK-A511 D:0.26m H:0.8m DDK-A512 D:0.22m H:0.6m



DDK-A515 D:0.22m H:0.8m DDK-A517 D:0.22m H:0.8m DDK-A518D:0.22m H:0.8m DDK-A519 D:0.25m H:0.8m DDK-A520D:0.22m H:0.8m DDK-A521 D:0.22m H:0.8m



DDK-A528W250 x H600mm DDK-A529W250 x H600mm DDK-A522D:0.22m H:0.6m DDK-A525W250 x H600mm DDK-A526W250 x H600mm DDK-A527W250 x H600mm



DDK-A201 D:0.22m H:0.6m DDK-A202 D:0.25m H:0.6m DDK-A203 D:0.25m H:0.6m DDK-A204 D:0.22m H:0.6m DDK-A205 D:0.19m H:0.6m DDK-A206 D:0.22m H:0.6m DDK-A207 D:0.22m H:0.6m DDK-A208 D:0.22m H:0.6m



DDK-A213 D:0.13m H:0.6m DDK-A214 D:0.22m H:0.6m DDK-A215 D:0.25m H:0.6m DDK-A216 D:0.22m H:0.6m DDK-A217 D:0.22m H:0.6m DDK-A218 D:0.19m H:0.6m DDK-A219 D:0.19m H:0.6m DDK-A220 D:0.3m H:0.6m



DDK-A221 D:0.22m H:0.6m DDK-A222 D:0.22m H:0.6m DDK-A224 D:0.27m H:0.6m DDK-A225 D:0.25m H:0.6m DDK-A226 D:0.22m H:0.6m DDK-A227 D:0.22m H:0.6m DDK-A228 D:0.25m H:0.6m DDK-A233 W220 x H600mm



DDK-A230
W250 x H600mm



DDK-A231
W250 x H600mm



DDK-A232
W250 x H600mm

Solar Lawn Light

Lamp Height: 60-80 cm (customizable upon client request)
Material: Stainless Steel
Solar Panel Type: Polycrystalline / Monocrystalline
Light Source: LED
Available Colors: White / Warm White / Yellow / Red / Green / Blue / RGB flashing (optional)
Battery: 3.6V or 6V
Control Mode: Dedicated solar lawn light controller (light-sensing automatic control)
Lighting Duration: 10-12 hours per night, up to 3 consecutive cloudy or rainy days



DDK-A301 D:0.25m H:1m DDK-A302 D:0.22m H:0.6m DDK-A303 D:0.22m H:0.6m DDK-A304 D:0.3m H:0.6m DDK-A305 D:0.22m H:0.6m DDK-A306 D:0.22m H:0.6m DDK-A307 D:0.22m H:0.6m



DDK-A308 D:0.22m H:0.6m DDK-A309 D:0.22m H:0.6m DDK-A310 D:0.22m H:0.6m DDK-A311 D:0.22m H:0.6m DDK-A315 D:0.3m H:0.6m DDK-A316 D:0.25m H:0.6m DDK-A317 D:0.27m H:0.6m



DDK-A318 D:0.19m H:0.6m DDK-A319 D:0.22m H:0.6m DDK-A323 D:0.22m H:0.6m DDK-A324 D:0.22m H:0.6m DDK-A327 D:0.25m H:0.6m DDK-A328 D:0.22m H:0.6m



DDK-A329
W255 x H600mm



DDK-A330
W220 x H600mm



DDK-A331
W220 x H600mm



DDK-A332
W220 x H600mm



DDK-A333



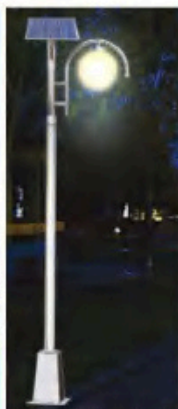
DDK-A334



DDK-A1204 H:3.2-3.5m



DDK-A1202 H:3.2-3.5m



DDK-A1206 H:3.2-3.5m



DDK-A1212 H:3.2-3.5m



DDK-A1218 H:3.2-3.5m



DDK-A1217 H:3.2-3.5m



DDK-A1219 H:3.2-3.5m



DDK-A1216 H:3.2-3.5m



DDK-A1215 H:3-4m



DDK-A1223 H:3-4m



DDK-A1220 H:3.2-3.5m



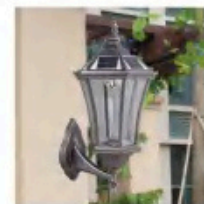
DDK-A1221H:3.2-3.5m



DDK-A1222



DDK-A1224



DDK-1319
W240 x H420mm



DDK-1322
W240 x H1150mm



DDK-1327
W240 x H500mm



DDK-1329
W240 x H500mm



DDK-1320
W240 x H420mm



DDK-1321
W240 x H500mm



DDK-1323
W240 x H500mm



DDK-1324
W240 x H1100mm



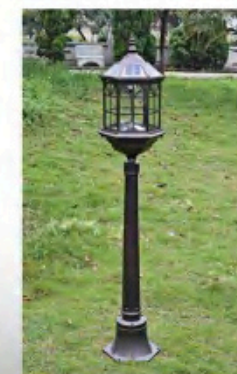
DDK-1325



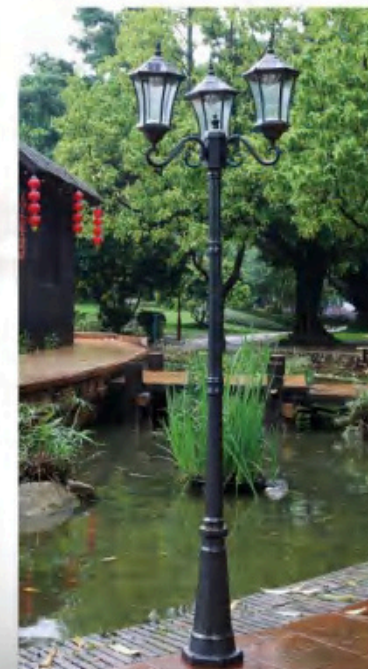
DDK-1328
W240 x H500mm



DDK-1330
W240 x H900mm




DDK-1331
W240 x H1200mm




DDK-1326
H3000mm



DDK-1332
W240 x H3000mm



SOLAR ENERGY LANDSCAPE LAMP SERIES



DEVELOPER
AMENITIES

BY-01

BY-02

BY-03

BY-04

BY-05

BY-06

BY-07

BY-08

BY-09

BY-10

BY-11

BY-12

BY-13

BY-14

BY-15

BY-16